



Irish Cruising Club

## South and West Coasts of Ireland Sailing Directions

15th edition published January 2020

Amendments to 11 December 2020

### DISCLAIMER

We hope that you will find the information contained in these Amendments helpful. Whilst every care is taken to ensure that the information contained in these Amendments is accurate, we hereby formally disclaim any and all liability for any personal injury, loss and/or damage howsoever caused, whether by reason of any error, inaccuracy, omission or ambiguity in relation to the contents and/or information contained within the Amendments or otherwise. © Irish Cruising Club Publications CLG.

The pages of the book are in two columns, of 55 lines maximum each. Amendments in the main text are shown as L (left) or R (right) referring to column, followed by the line number.

Page 278: a landing pontoon facility, which almost dries at LWS but nevertheless greatly improves access, has been installed towards the seaward end of **Westport** Quay, and a new slipway has been built further west, at the W end of Roman Island. (15 January 2020)

Page 25L line 43, page 36R line 19, page 199L line 2 and page 224R line 40: the fuel pumps at **Kilmore Quay** marina and **Kilrush** have switched to white diesel. At **Rossaveal**, a quayside supply is available by towable bowser from a nearby filling station. Call Gearoid Walsh on 087 252 5088; some notice is requested, and a minimum order quantity may apply. (14 February 2020)

Page 130R line 13: **Lawrence Cove** marina keeps a supply of white diesel in cans. (17 February 2020)

Page 130304, Lights and Marks: **Carrickpatrick** buoy has AIS. (3 May 2020)

Page 333, Lights and Marks: **Burtonport** No.5 beacon shows Fl G 3s and No.8 buoy QR. (3 May 2020)

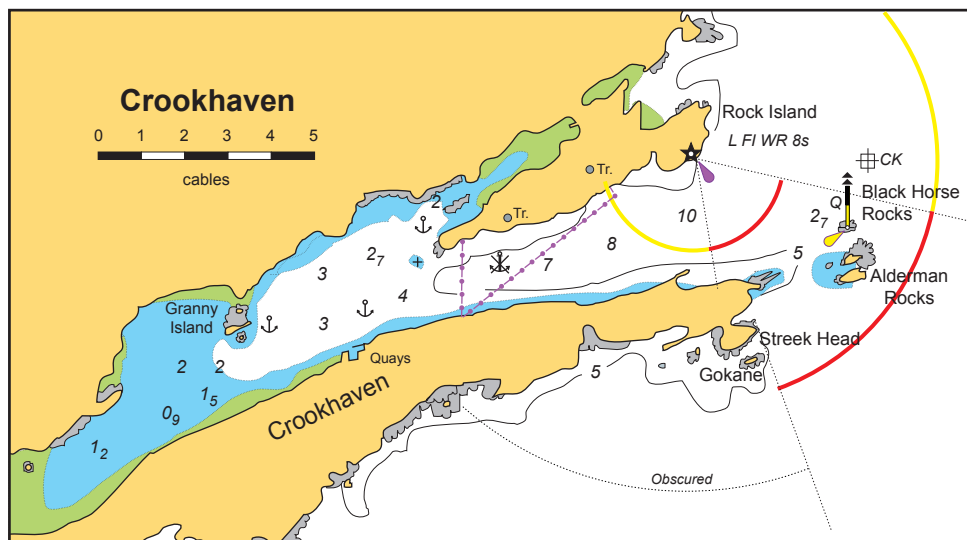
Page 105L, line 20, and Plan on p106: a rock with 1.5m has been discovered 1.5 cables SW of **Illaunagrogh** (27 May 2020)

Page 25L line 43 and page 94R, line 40: white diesel is now available at **Baltimore** from a portable bulk tank. Phone Kieran Cotter 086 826 6002 or enquire at the Centra shop. (9 June 2020)



Westport pontoon (Alex Blackwell)

Page 115R line 6, and Plan: two underwater pipelines (the western one hitherto uncharted) cross the entrance to **Crookhaven** harbour, between Streek Head and Rock Island. Avoid anchoring in this area. (18 June 2020)



Page 82, Lights and Marks, and Plan: **Wine Rock W** Card beacon at the entrance to Clonakilty Harbour now shows Q(9) 15s. (2 August 2020)

Page 161, Lights and Marks, page 164R line 5 and Plan on page 165: Middle Rock at **Derrynane** is now marked by a pole beacon, SHM FI G 3s (12 August 2020)



*Middle Rock beacon, Derrynane  
(photo Gearoid O'Shea, DAFM)*

Page 40L line 13: The HM phone number at **Dunmore East** is now 051 312359 and the Pontoon Superintendent is on 087 345 5623. (14 August 2020)

Page 195, Lights and Marks: **Letter Point** buoy now shows Fl R 6s. (1 Sept 2020)

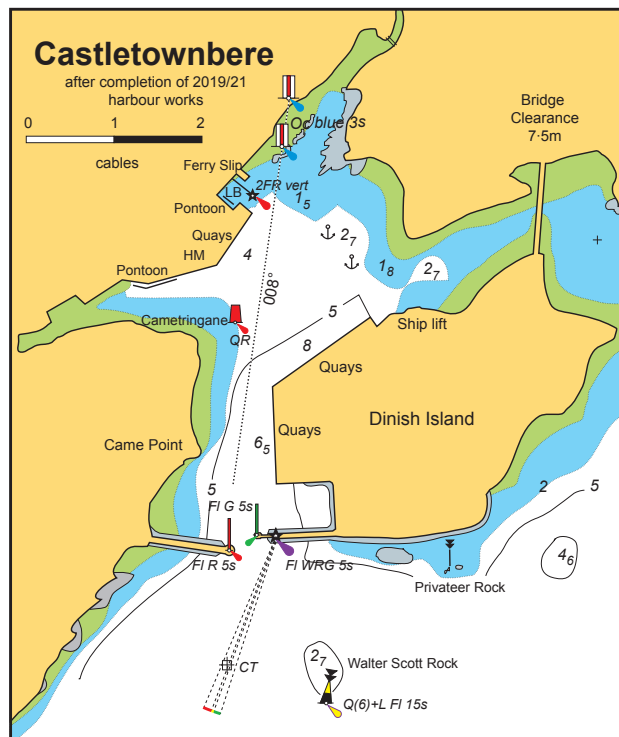
Page 57L line 13, **Ballycotton**: for “NE of the harbour” read “NW of the harbour”. (8 Sept 2020)

Page 240R line 14: an underwater pipeline runs across the narrows of Straddle Pass, from West Point on **Mweenish** to the NE point of **Mason Island**. Avoid anchoring near the narrows. (31 Oct 2020)

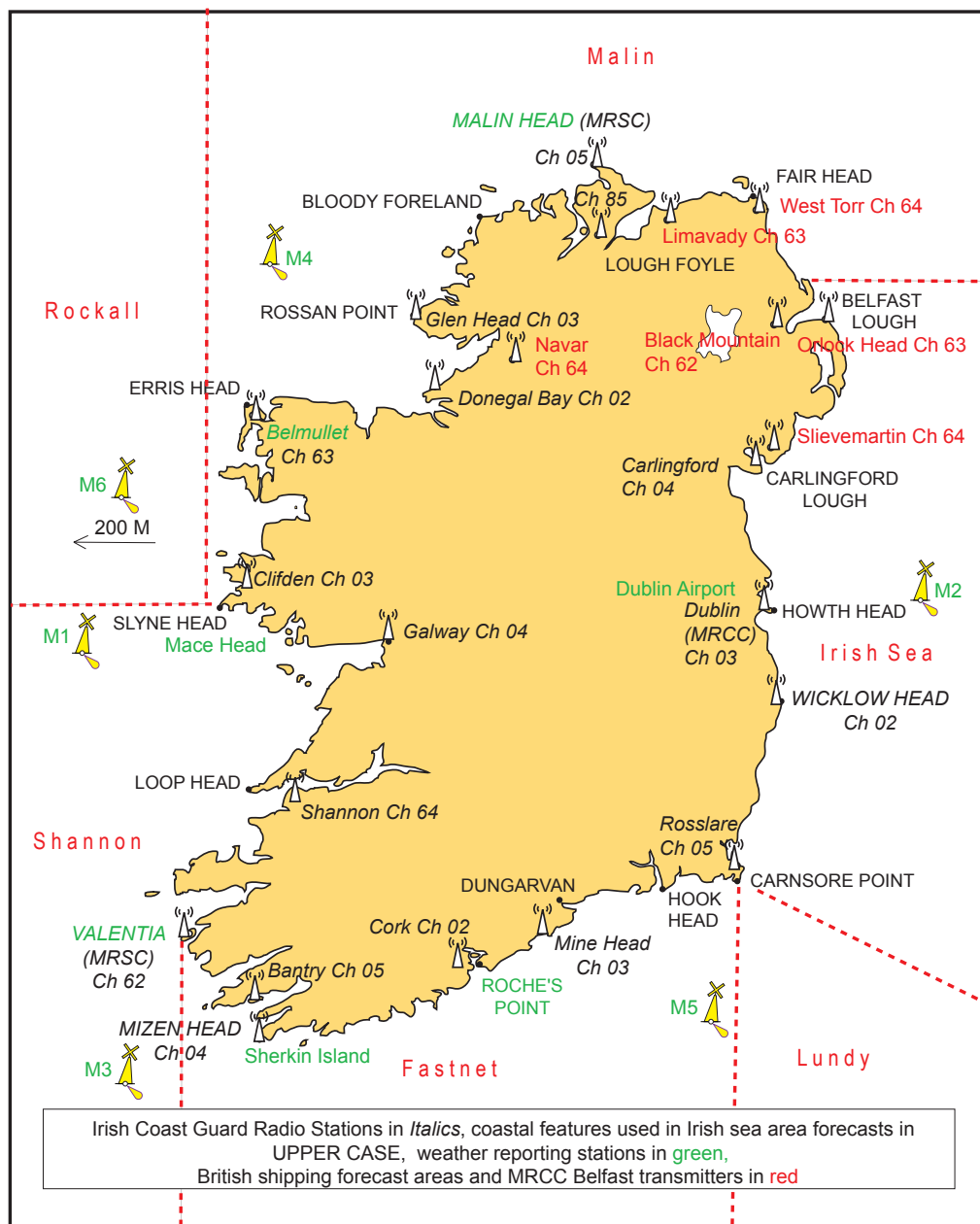
Page 304R line 16, **Killala**: an array of Special Mark beacons SE of Bartragh Pool marks an aquaculture site. (15 Nov 2020)

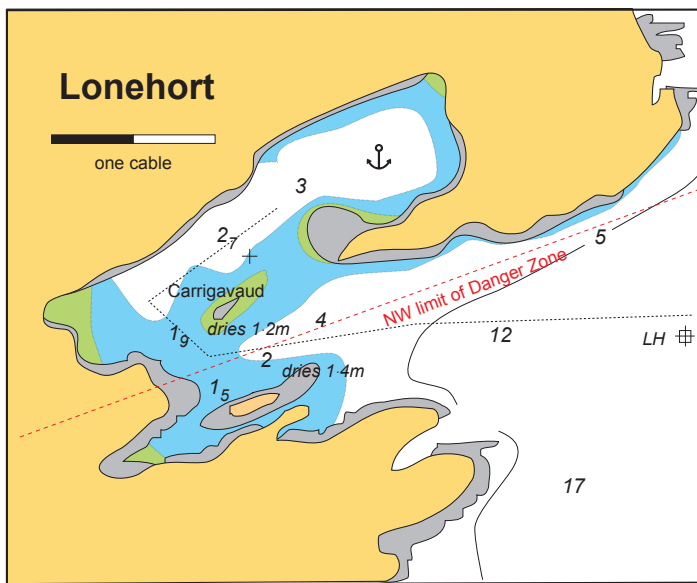
Page 35R line 44, and Plan on p36: The entrance to **Kilmore Quay** has been dredged to 1.9m. Delete “Recent...LW” (9 Dec 2020)

Page 125, Lights and Marks, and Plan on p128: the harbour works at **Castletownbere** have been delayed by issues including the Covid-19 pandemic and will not now be completed until some time in 2021. The existing inner leading beacons 008°, white pillars, red stripe, Oc blue 3s 1M, front 4m, rear 7m, have been retained. The PEL will be moved to the new East Breakwater, and will be 6m in height, showing G 020·5°-023°, W 023°-023·5°, R 023·5°-025·5°. The line is the same as before down Pipers Sound but the red sector is narrower. Add **Castletownbere W breakwater**, pole beacon PHM Fl R 5s 6m 4M, and **E breakwater**, pole beacon Fl G 5s 6m 4M. Replace the plan on p128 with the one on the right. (9 Dec 2020)



Page 353, Coastguard Radio Stations; front cover flap, and Plans on pp 354 and 368: Irish Coast Guard Radio VHF working channels are changing as follows: Dublin from 83 to 03, Rosslare from 23 to 05, Mine Head from 83 to 03, Cork from 26 to 02, Bantry from 23 to 05, Valentia from 24 to 62, Clifden from 26 to 03, Belmullet from 83 to 63, Glen Head from 24 to 03 and Malin Head from 23 to 05 and 85 (the transmitter at Malin Head itself will use Ch 05, while the one on Scalp Mountain, NW of Derry, will use Ch 85). Working channels for Carlingford (04), Mizen Head (04), Galway (04) and Donegal Bay (02) will not change. The changes are expected to be completed by January 2021. Replace the plans on pp 209 and 224 with the one on the right. (9 Dec 2020)





Page 131R line 5, aerial photograph on p131 and Plan on p132: the drone photograph above and the revised plan (left) depict **Lonehort** more accurately, and clearly show (centre, above) what is considered by archaeologists to be the remains of a boulder breakwater built by the Vikings 1000 years ago. The existing entrance directions are unaffected. (11 December 2020)